



Almond Hill Junior School Project

Welcome from the site team

Welcome to the latest edition of the Kier Newsletter for the Almond Hill Junior School project. These regular publications are aimed at keeping you updated with progress on site. We will highlight recent construction works, as well as what to expect in the upcoming months.

The programme

Works on target for completion by the end of August 2017.

What we have achieved so far

The new play area is complete and has been handed over to the school.



The structural frame (cross laminated timber) is now complete as is the perimeter scaffold.

Roofing, external cladding (which will comprise render, rain screen cladding (Trespa) and brick cladding) have also commenced



Who are we?

Kier Construction operates throughout the UK, and this project is delivered by the Eastern region, and managed out of our Waterbeach Office.

To find out more information about the Eastern region of Kier, please visit our website:

www.kier.co.uk/eastern

How to contact us

Safe pedestrian access for visitors will be provided to our site office, so please feel free to visit us to discuss and queries.

Our nominated site contact is Andy Gruncell

T: 07583 105704.

Andy can be contacted during normal working hours.

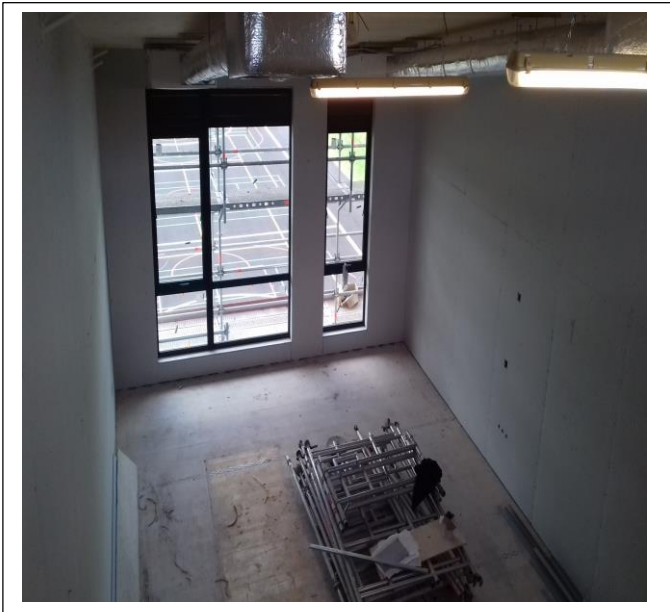
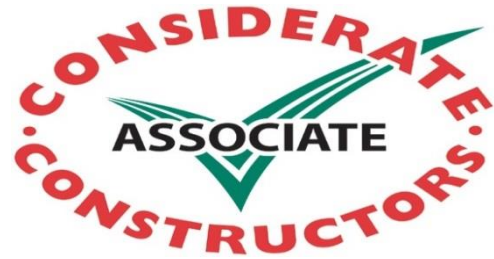
Write to us

Alternatively, you can write to us at our main office:

Kier Construction
Building 3000
Cambridge
Research Park
Waterbeach
Cambridge
CB25 9PD

T: 01223 205900

Works continue to progress inside the building, with the walls now closed up to the first of six classrooms



The site is registered with the Considerate Constructors scheme. As part of our commitment, we will do what we can to minimise disruption from the project. We expect our first visit during the next couple of weeks!

Car Parking.

Kier staff and contractors will park in dedicated contractors parking facilities located within the site compound

Deliveries and site traffic.

Our deliveries are planned to avoid busy school start and close times. We will therefore avoid deliveries between 08.00-09.15 and 14.45-15.30

Site Working Hours

Our site working hours are 07.30 – 17.30 Monday to Friday

Works planned for the next month.

Completion of the external cladding. Completion of roofing works to the lower level roof, and continuation of works to the higher level roof. Within the next couple of weeks, we will have a mobile crane on site again, this time to lift the 11m long roofing sheets onto the high level roof. Progression of internal works, to include completion of internal walls, and commencement of ceilings.

If you have any concerns, please do not hesitate to contact us.

June 2017